



# Marsden State School Community Hub

## Term 1 2023



*Monday Tuesday Wednesday Thursday Friday*

*Free Breakfast.....is served daily from 8.am to 8.15 am at the Dean Hall*

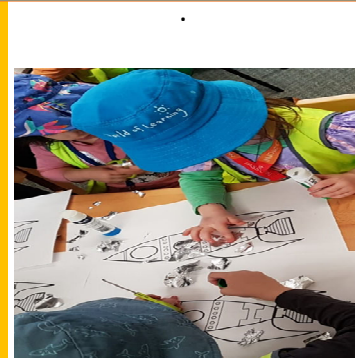
Call Centre – **Belong**...Is a free coaching program to help improve the way you think, and get you back on track. **Call 0732774231**

Occupational Therapist.. Lauren visits The Hub Fortnightly to assist with your child's development.  
Speech Therapist Emily from Headstart will assist with your child's speech concerns...This is a Free service

Music Therapy with Anne..Mon

**Homework Club. .MON ,TUE, WED**  
**2.40-3.15PM**

**Marsden Young Explorer's Playgroup**  
**8.30-10.30 am**  
**Howard Centre**

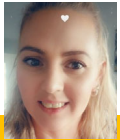


*Stay and Play.. Fortnightly Thursday 's learning experiences for your child 's successful future...See Penny*


**Child Health Nurse** visit's Playgroup on **Wednesday's**

*Penny & Tamara*  
**Community Hub Leaders**

**Monday -Thursday**  
[pdears@eq.edu.au](mailto:pdears@eq.edu.au)  
**Marsden State School**  
**3489 9333**



**Marsden Young Explorer's Playgroup**  
**8:30 am – 10:30 am**  
**Howard Centre**

**Watch this space** We hope to have Reclink visit.  
  
**Well Being ...Reclink will offer Gentle Excersises**  
Tuesday in the Hub...9.15am

**TAFE Adult English.**  
**9am-11am**

**TAFE Adult English**  
**9am-11am**

**All Welcome!**

### **Marsden Young Explorers Playgroup**

This free playgroup offers fun, interactive, engaging, and educational activities for Mums/Dads and children 0-5 years.

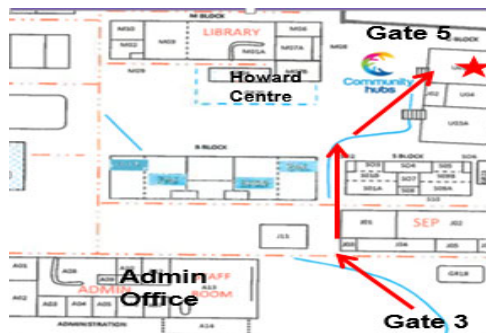
Held in the Howard Centre Monday and Wednesday. 8.30-10.30

### **Adult English Class**

A free class for all levels Monday and Wednesday in the Hub, Come and meet the teachers! Children welcome!

### **Transition to Prep**

- Every Tuesday and Thursday 10am-10.45 am
- Open to early year's centres and the community...Prep readiness program.
- Helps to develop Skills your child will need in Prep.



- ✓ Please feel free to contact us for information and support. For more information visit the Hub office at U-block, or contact us:
- ✓ Phone: 3489 9333
- ✓ Email: [pdear5@eq.edu.au](mailto:pdear5@eq.edu.au)
- ✓ Facebook: Community Hubs Logan
- ✓ [www.communityhubs.org.au](http://www.communityhubs.org.au)
- ✓ 32 Hickory Street, Marsden 4132



**Term 1 2023**  
**What's on at Marsden State School Community Hub?**

